



# Westport Elementary News

September 2019

## A wonderful start to the school year!

Thank you to all who have made the opening of the school year so exciting and memorable!

It has been eye-opening to observe many relationship building activities throughout our classrooms during the first days of our school year. These activities will serve as the foundation for a mindful and effective learning community. Strong relationship building between staff and students is of the utmost importance and has been on display from the minute the students entered the building.

It has been very beneficial meeting families at our New Student Orientation in August and our Open House this past Wednesday. Please stay involved as we look forward to build open lines of communication with you to support your child's learning and growth.

Something that we are setting expectations around is being respectful to others and the use of manners. We are modeling this behavior as well as letting students know when they are displaying good character and making good choices. We encourage you to promote this at home as kindness and respect should be held in high regard. Please ask your child how he/she showed respect or used good manners during the day and how someone else showed kindness or displayed good character. Share your day too!

~Mrs. Stacey Duquette

## Student Information Forms

At the beginning of each year, each child's emergency contacts need to be updated. This information is critical in maintaining home/school communication and is necessary to have in emergency situations. As information changes throughout the year, please update the office.

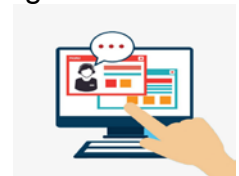
### WES Office/Support Staff:

Principal: Mrs. Stacey Duquette  
Vice-Principal: Mrs. Leah Chesney  
Executive Secretary: Mrs. Lori Melo  
Special Education Clerk: Ms. Suzanne Lemar  
Office Clerk: Mrs. Pat Amaral  
School Nurse: Mrs. Nicole Machado  
Guidance: Mrs. Beth Bacchiochi  
Mrs. Jennifer Borelli

## Online Look-fors:

The Fall 2019 Adult Education catalog is now online. Registrations must be complete by September 27<sup>th</sup>.

An online survey regarding School Uniforms was sent out last week. We encourage you to respond and voice your thoughts.



## Safety and Cosmetic Improvements to WES

A big "Thank You" goes out to our Maintenance and Custodial Staff! They worked extremely hard to make sure all needed work and cleaning was complete for our opening.

### Improvements:

-Our Office Safety Window was installed over the Summer. Now, visitors stop and check-in at the window so our doors can remain locked.

-The office carpet was removed and tile was put down and a fresh coat of paint brightened the walls.

-A new Gymnasium floor was installed and is very impressive.

-More spaces were added to the front parking lot and the drainage issues were corrected in the front loop.



## Important Dates



Monday, 9/16 & Tuesday 10/8  
WES/MAC PTO 6:00 at the Macomber

Monday, 9/30 WES Picture Day

Monday, 10/14 Columbus Day (NO School)

*Kindness*  
changes  
EVERYTHING

## Drop-off and Pick-up

Please remember that student drop-off begins at 8:15 a.m. If you need to drop your child off earlier, please reach out to Ms. Jennifer Chaves, our Extended Day Director at [jchaveswestportschools.org](http://jchaveswestportschools.org) to discuss morning and/or afternoon options for your child.

A reminder that when picking students up in the afternoon, please do not block buses when parked along the road and have your assigned pickup number on your dashboard or hanging from your rear-view mirror so it is visible to our staff. \*Please do not arrive before 2:40 p.m. in order to keep the road open. Students need to get picked up by 3:15 p.m. each day.



## 6 Day Cycle Rotation for Mid-Sept. to Mid-Oct.

Monday	Tuesday	Wednesday	Thursday	Friday
<b>16</b> Day 4	<b>17</b> Day 5	<b>18</b> Day 6	<b>19</b> Day 1	<b>20</b> Day 2
<b>23</b> Day 3	<b>24</b> Day 4	<b>25</b> Day 5	<b>26</b> Day 6	<b>27</b> Day 1
<b>30</b> Picture Day! Day 2				
	<b>Oct 1</b> Day 3	<b>2</b> Day 4	<b>3</b> Day 5	<b>4</b> Day 6
<b>7</b> Day 1	<b>8</b> Day 2	<b>9</b> Day 3	<b>10</b> Day 4	<b>11</b> Day 5
<b>14</b> No School Columbus Day	<b>15</b> Day 6	<b>16</b> Day 1	<b>17</b> Day 2	<b>18</b> Day 3